



Meeting

May 27th 2026

Start time: 7.30pm





Agenda

- Introducing the Otford Society
- The Village Protection Fund
- Otford Protection Committee
- Grey Belt Documentary Clips
- Sidney Gardens - What we can do to Help?

REC ●





The Otford Society



Who we are





What we do



2025 Events & Activities



Otford Village Hub
Public group · 10.0K members



OTFORD FETE
Monday 26th May • 11am-4pm
THE 200TH ANNIVERSARY OF THE MODERN RAILWAY

THEN NOW

The Otford Great **BRITISH BARBECUE**

Bank Holiday Monday
25th August • 12-6pm
On the Village Green
BBQ served until 3pm

Live music, afternoon tea and cakes, including ice-cream, wine, beer, soft drinks, and children's activities will continue until 6pm

Bring your own rugs and chairs and enjoy the day

Purchase a £1 advance ticket, before Friday 22 August, at one of our dedicated outlets and get £2 off your chosen meal, including children's lunchboxes

Scan the QR Code for more information



Join The Fight!

Protect Otford

CERTIFICATE OF Excellence

Awarded in recognition of achieving Gold Level in the category of

It's Your Station
to
Otford Station Volunteers

Sponsored by Merseyrail, Julia Townsend Chief Executive, Community Rail Network, and COMMUNITY RAIL AWARDS



THE DINOSAUR THAT ATE EASTER
Quick, Children we need your help!
...the Dinosaur is going to eat our Easter Eggs. Can you help us spot as many Easter eggs as you can around the village and save them from his greedy claws?

Easter Eggs will be in shop windows in the High Street and the Parade, and hidden along the footpaths taking the two.

Children will be able to report how many they've counted to the lovely people in Hillie Flowers, Isabel Mealey (on the Parade), Fire & Country (near the pond) or Yvonne's Shop in Totton Lane - to claim a small prize.

Please remember to leave the egg where you spot them for others to find and count.

4th April until Easter Monday

Created for the community by YOUR Otford Society!

THE OTFORD SOLAR SYSTEM
25TH ANNIVERSARY

RE-LAUNCHING SATURDAY 26TH JULY 2025

12 NOON, OTFORD RECREATION GROUND

OTFORD CHRISTMAS PENGUIN TRAIL
Sat. 29th November to Sun. 14th December

Children... how many Penguins can you find hiding in the shop windows of Otford High Street and Otford Parade?

The trail is FREE - and all you have to do is write down each Penguin's name and what Christmas item they are with.

Please remember to bring some paper and something to write with...!

Created for the community by YOUR Otford Society!



Nurturing Community Spirit!



2025 Supporting Local Causes



Village Christmas Tree



Library Bench



Christmas Dinners



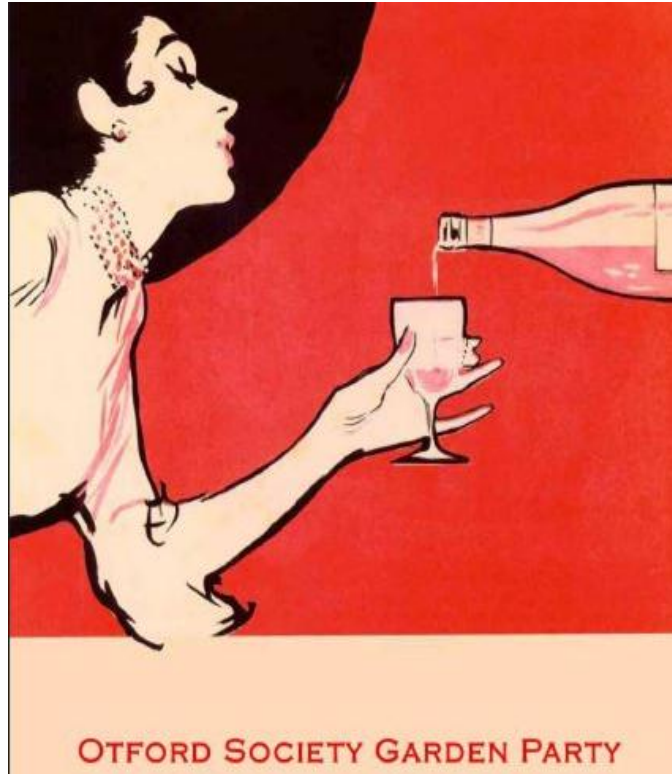
Watering the Heritage Orchard



Village PA System



What's Coming?



Garden Party
Saturday 27th June 2026



Otford Christmas Fayre
Saturday 21st November 2026



Agenda

- Introducing the Otford Society
- **The Village Protection Fund**
- Otford Protection Committee
- Grey Belt Documentary Clips
- Sidney Gardens - What we can do to Help

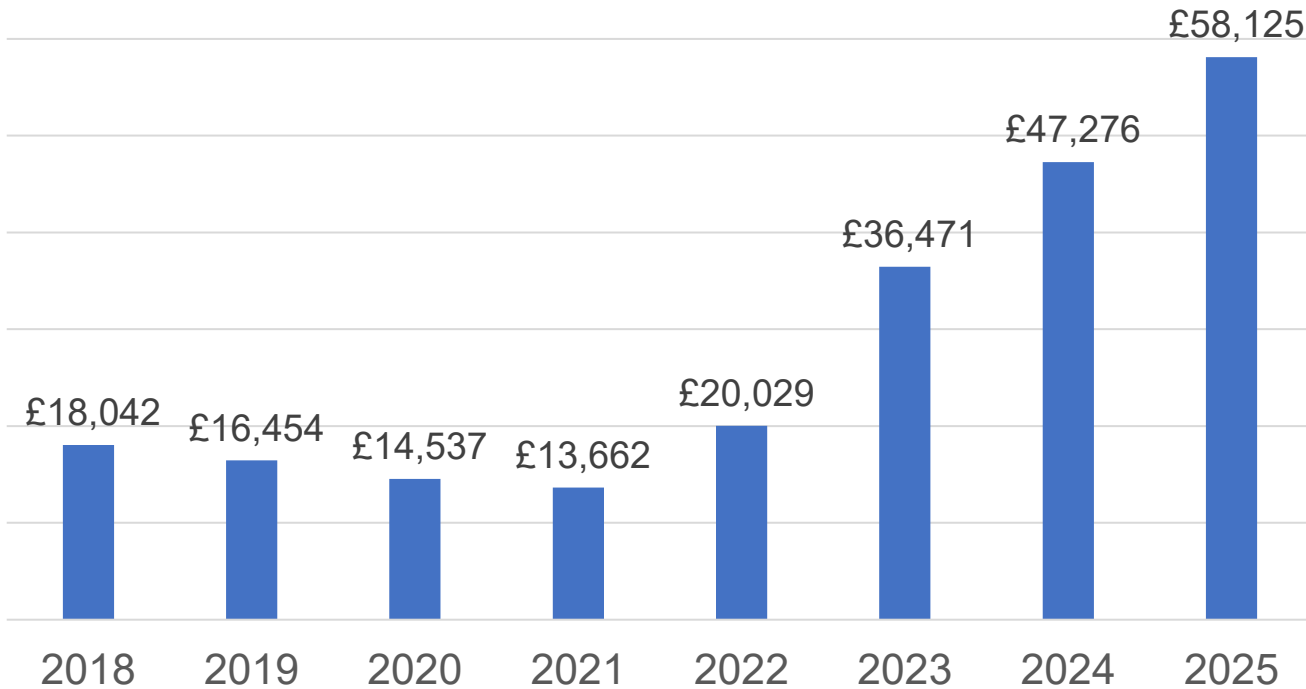
REC ●





Net Worth

31st December 2025



Savings Acc.	£	50,000
Current Acc.	£	8,125
Cash	£	0
TOTAL	£	58,125



Reserves

Village Protection Fund

Savings Account (1st January 2026)	£50,000
Current Account	£ 5,000



Agenda

- Introducing the Otford Society
- The Village Protection Fund
- **Otford Protection Committee**
- Grey Belt Documentary Clips
- Sidney Gardens - What we can do to Help

REC ●



The Otford Protection Committee

- Protecting Otford from unreasonable development
- Protecting our Green Belt for everyone's future

THANK YOU For Fighting With Us!



The Otford Protection Committee



London
Green Belt
Council



Sevenoaks District Council – Local Plan

- Regulation 18 – December 2025
- Regulation 19 – July/August 2026



Consultations
'Have your say'

- Final submission to UK Gov – December 2026

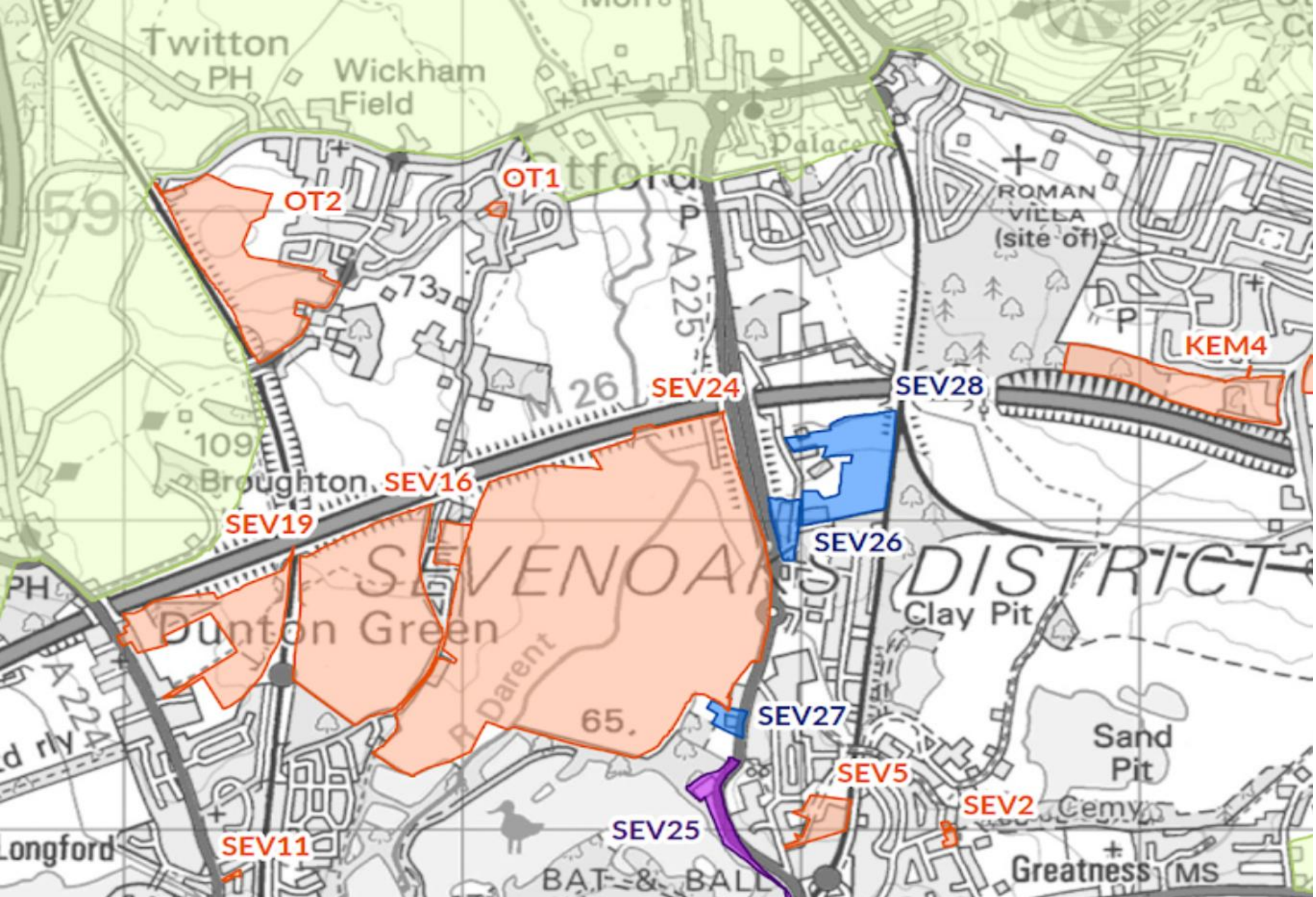
- Examinations in Public – 2027



Public hearings with representation
from residents (and lawyers for
developers)

- Plan Adopted - December 2027
- Building starts 2028/29





New Houses (with c. 2 miles of Otford)

• Bat & Ball Quarry	950	Approved
• Fort Halstead	650	Approved
• OT1 – Ryecroft Otford	7	In Plan
• OT2 – Hale Lane	150	In Plan
• SEV 16/19/24 – Sevenoaks Rd	1,500	In Plan
• Kemsing – various	333	In Plan
• Broke Hill	850	Disputed
• Halstead – various	227	In Plan
• Misc Others	100	In Plan or Approved

Total New Houses

4,767



Putting this into context

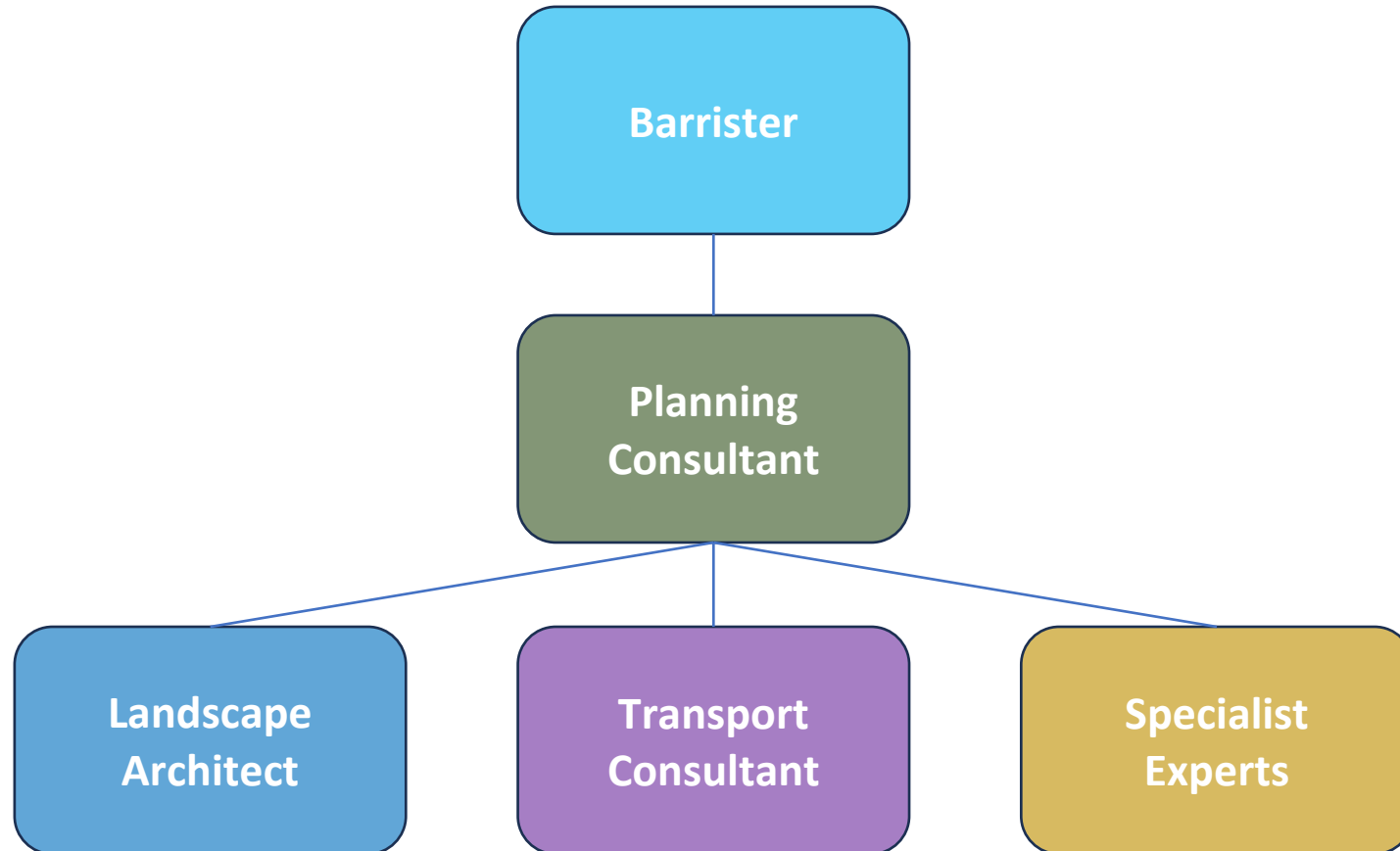
- There are approximately 1,400 homes in Otford
- The 2021 census says the population of Otford was 3,500
- On this basis (2.5 people per household) we can expect **an extra 11,000 people** in or moving through our village
- Kent has a higher than average number of cars per household (1.36) – so we can expect an **additional 6,500 cars** on our roads

Regardless of losing our greenbelt;

- Can village road cope with this increase ?
- Are there enough schools / GPs / Hospitals ?
- Are the roads sufficient for such a significant increase in people ?



What OtSoc is doing



What OtSoc is doing

- For the OT2 site (Hale Lane) – a full, evidence backed objection was submitted in December 2025, including;
 - Independent report on transport, public services, walking/cycling, access and sustainability
 - Independent report on Landscape viability and impact
- The SEV16/19/24 – we have commissioned expert reports on these sites and expect them well ahead of the summer deadline
- We need to be mindful of this Government moving the goal posts – they are proposing major changes to National Planning Policy Framework (NPPF)



Agenda

- Introducing the Otford Society
- The Village Protection Fund
- Otford Protection Committee
- **Grey Belt Documentary Clips**
- Sidney Gardens - What we can do to Help

REC ●





Clips from Green/Grey Belt Documentary Film



Agenda

- Introducing the Otford Society
- The Village Protection Fund
- Otford Protection Committee
- Grey Belt Documentary Clips
- **Sidney Gardens - What We Can Do to Help**

REC ●

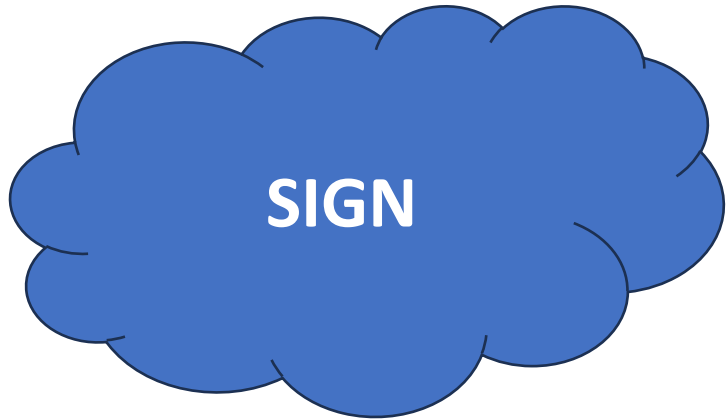




What we can do to help



What Can You Do ?



What Can You Do?

- Do **not** respond to the Developer's "Consultation"
- Ask your elected representatives to support you:
 - Otford Parish Council: clerk@otfordpc.co.uk
 - Sevenoaks District Council: cllr.roy@sevenoaks.gov.uk
 - Kent County Council: Marc.Logen@kent.gov.uk
 - Member of Parliament: laura.trott.mp@parliament.uk
- Sign the Petition
- Join The Otford Society: <https://otfordsociety.org.uk/membership>
- Help the Otford Protection Committee
- Donate to The Village Protection Fund: <https://otfordsociety.org.uk/donate>

REC ●





Questions





Thank You



The Otford Protection Committee

**YOUR
VILLAGE
NEEDS
YOU!**

